



# Powerbox 180 – 12

Enclosure with pre wired power supply with three fused 5amp (60watt) outlets

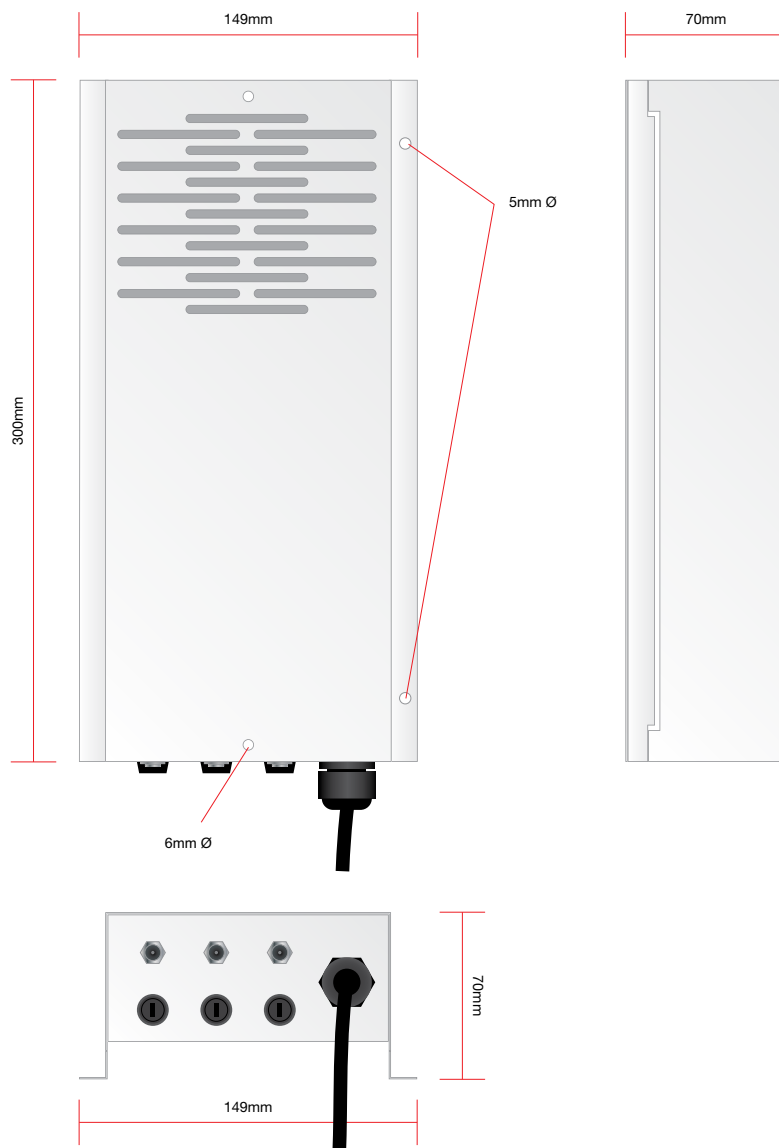
Technical Brochure

# 3 separate 5amp (60watts) fused outlets



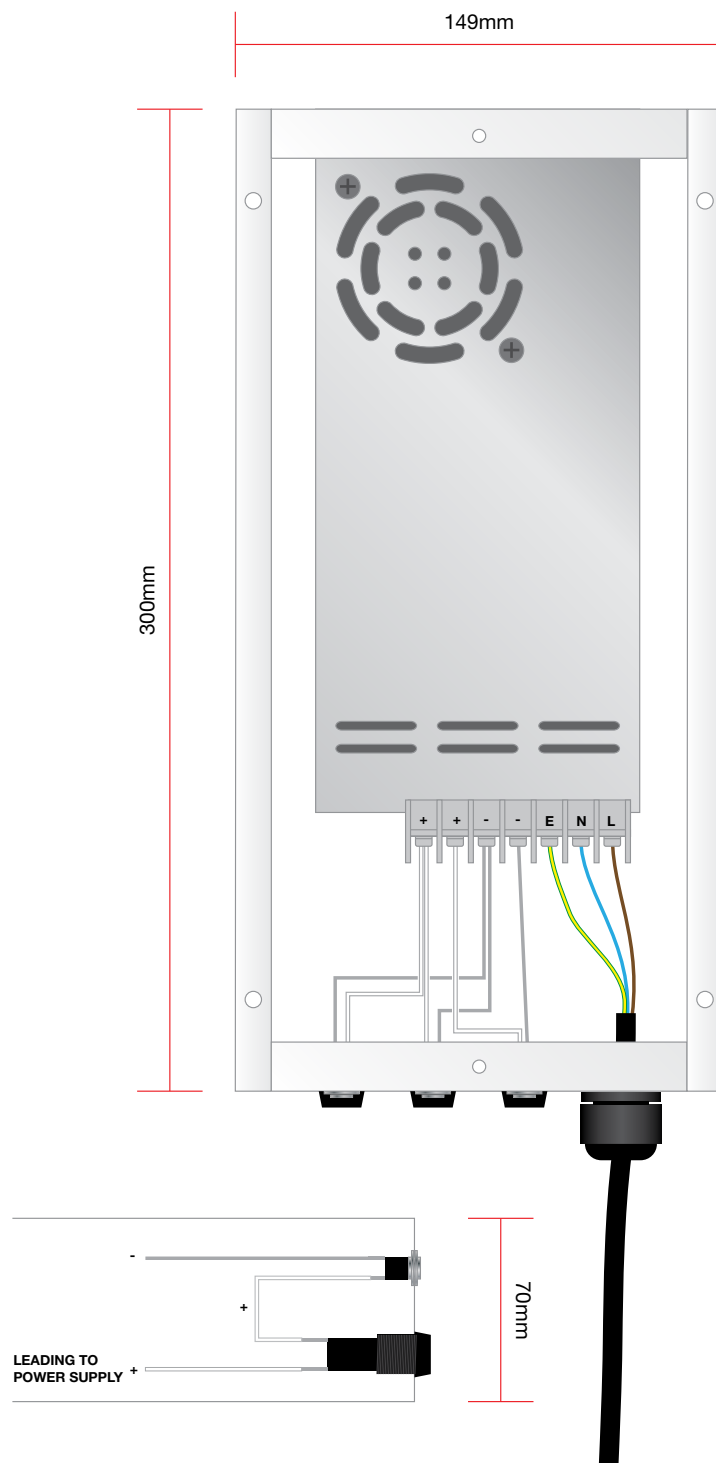
## Powerbox 180 – 12

Enclosure with pre wired power supply with three fused 5amp (60watt) outlets

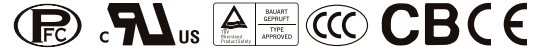


## Features

- 3 separate 5amp (60watts) fused outlets
- Overload protections on each outlet
- Easy changeable fuse without opening box
- Universal AC input
- Built in active power factor correction (PFC)
- Forced air cooling by built in DC fan
- Built in fan speed control
- 300(H) x 149(W) x 70(D).
- 3 year warranty

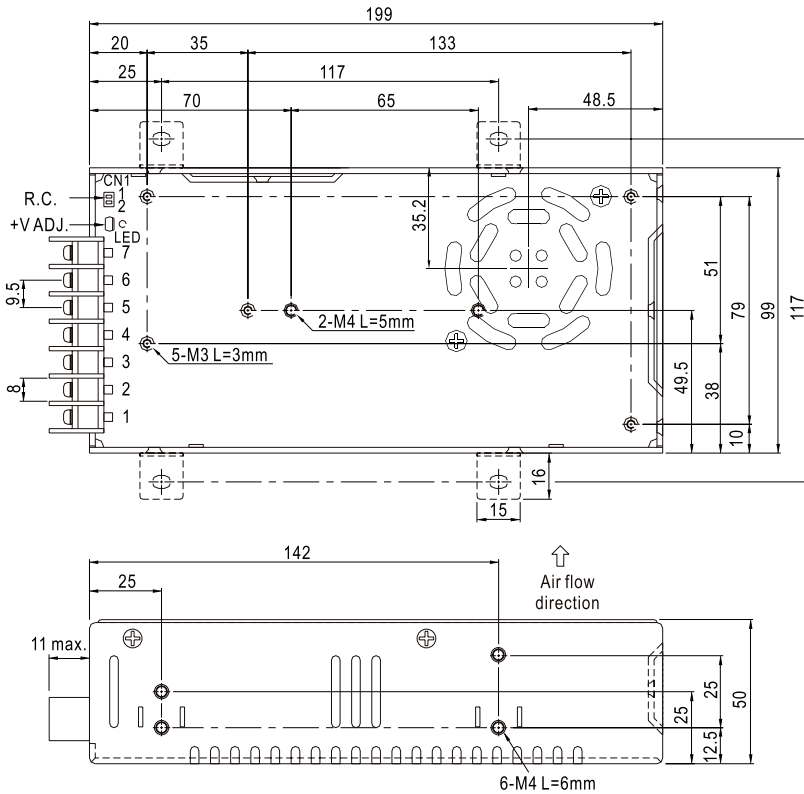


## Power Supply Specification



OUTPUT	DC VOLTAGE	12V	
	RATED CURRENT	16.7A	
	CURRENT RANGE	0 ~ 16.7A	
	RATED POWER	200.4W	
	RIPPLE & NOISE (max.) Note.2	100mVp-p	
	VOLTAGE ADJ. RANGE	11.4 ~ 13.2V	
	VOLTAGE TOLERANCE Note.3	±2.0%	
	LINE REGULATION	±0.5%	
	LOAD REGULATION	±0.5%	
	SETUP, RISE TIME	600ms, 40ms at full load	
	HOLD UP TIME (Typ.)	20ms at full load	
INPUT	VOLTAGE RANGE Note.5	85 ~ 264VAC	120 ~ 370VDC
	FREQUENCY RANGE	47 ~ 63Hz	
	POWER FACTOR (Typ.)	PF>0.93/230VAC	PF>0.97/115VAC at full load
	EFFICIENCY (Typ.)	84%	
	AC CURRENT (Typ.)	3.5A/115VAC	1.7A/230VAC
	INRUSH CURRENT (Typ.)	COLD START 50A/230VAC	
	LEAKAGE CURRENT	<2mA / 240VAC	
PROTECTION	OVERLOAD	105 ~ 150% rated output power Protection type : Constant current limiting, recovers automatically after fault is removed	
	OVER VOLTAGE	13.2 ~ 16.2V Protection type : Shut down o/p voltage, re-power on to recover	
	OVER TEMPERATURE	80°C ±5°C (TSW1 : detect on heatsink of power transistor) Protection type: Shut down o/p voltage, recovers automatically after temperature goes down	
ENVIRONMENT	WORKING TEMP.	-10 ~ +60°C (Refer to output load derating curve)	
	WORKING HUMIDITY	20 ~ 90% RH non-condensing	
	STORAGE TEMP., HUMIDITY	-20 ~ +85°C, 10 ~ 95% RH	
	TEMP. COEFFICIENT	±0.05%/°C (0 ~ 50°C)	
	VIBRATION	10 ~ 500Hz, 2G 10min./1cycle, 60min. each along X, Y, Z axes	
SAFETY & EMC (Note 4)	SAFETY STANDARDS	UL60950-1, TUV EN60950-1, CCC GB4943 approved	
	WITHSTAND VOLTAGE	I/P-O/P:3KVAC I/P-FG:2KVAC O/P-FG:0.5KVAC	
	ISOLATION RESISTANCE	I/P-O/P, I/P-FG, O/P-FG:100M Ohms / 500VDC / 25°C/70% RH	
	EMC EMISSION	Compliance to EN55022 (CISPR22) Class B,EN61000-3-2,-3	
	EMC IMMUNITY	Compliance to EN61000-4-2,3,4,5,6,8,11, ENV50204, EN55024, light industry level, criteria A	
OTHERS	MTBF	183.8K hrs min. MIL-HDBK-217F (25°C)	
	DIMENSION	199*99*50mm (L*W*H)	
	PACKING	0.85Kg; 20pcs/17.9Kg/1.28CUFT	
NOTE	<p>1. All parameters NOT specially mentioned are measured at 230VAC input, rated load and 25°C of ambient temperature.  2. Ripple &amp; noise are measured at 20MHz of bandwidth by using a 12" twisted pair-wire terminated with a 0.1uf &amp; 47uf parallel capacitor.  3. Tolerance : includes set up tolerance, line regulation and load regulation.  4. The power supply is considered a component which will be installed into a final equipment. The final equipment must be re-confirmed that it still meets EMC directives. For guidance on how to perform these EMC tests, please refer to "EMI testing of component power supplies."  (as available on <a href="http://www.meanwell.com">http://www.meanwell.com</a>)  5. Derating may be needed under low input voltages. Please check the derating curve for more details.</p>		

# Power Supply Mechanical Specification



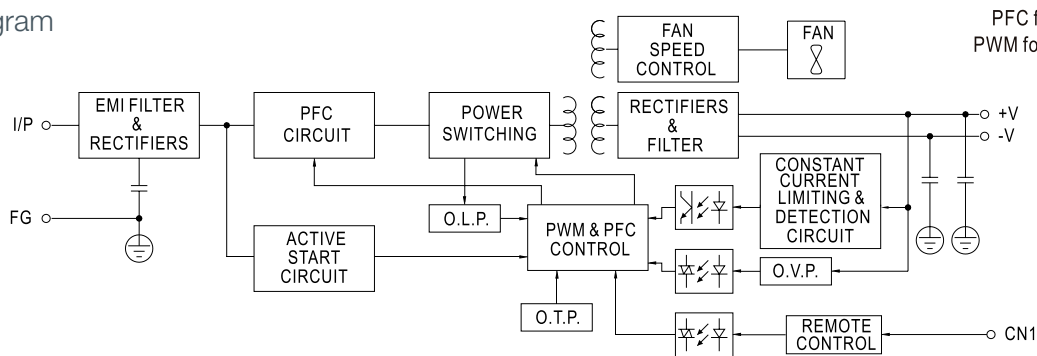
Terminal Pin No. Assignment

Pin No.	Assignment	Pin No.	Assignment
1	AC/L	4,5	DC OUTPUT -V
2	AC/N	6,7	DC OUTPUT +V
3	FG $\perp$		

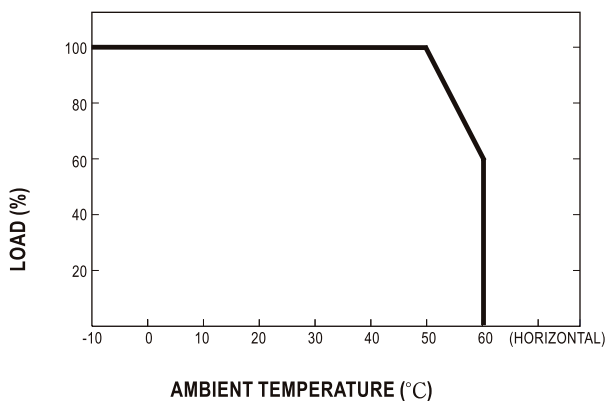
Remote ON/OFF(CN1):JST S2B-XH or equivalent(optional)

Pin No.	Assignment	Mating Housing	Terminal
1	RC+	JST XHP or equivalent	JST SXH-001T-P0.6 or equivalent
2	RC-		

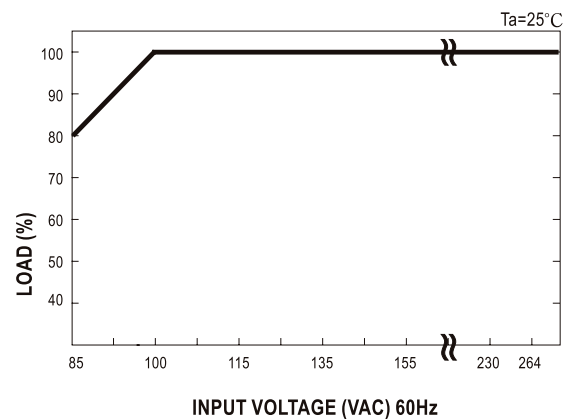
## Block diagram




## Derating curve



## Output Derating VS Input Voltage



For more information on Applelec's products, please get in touch:

 01274 774 477

 [sales@applelec.co.uk](mailto:sales@applelec.co.uk)

 [www.applelec.co.uk](http://www.applelec.co.uk)

---

 **Postal address:**

Applelec  
Unit 1, Wharfedale Business Park  
Shetcliffe Lane  
Bradford  
West Yorkshire  
BD4 9RW